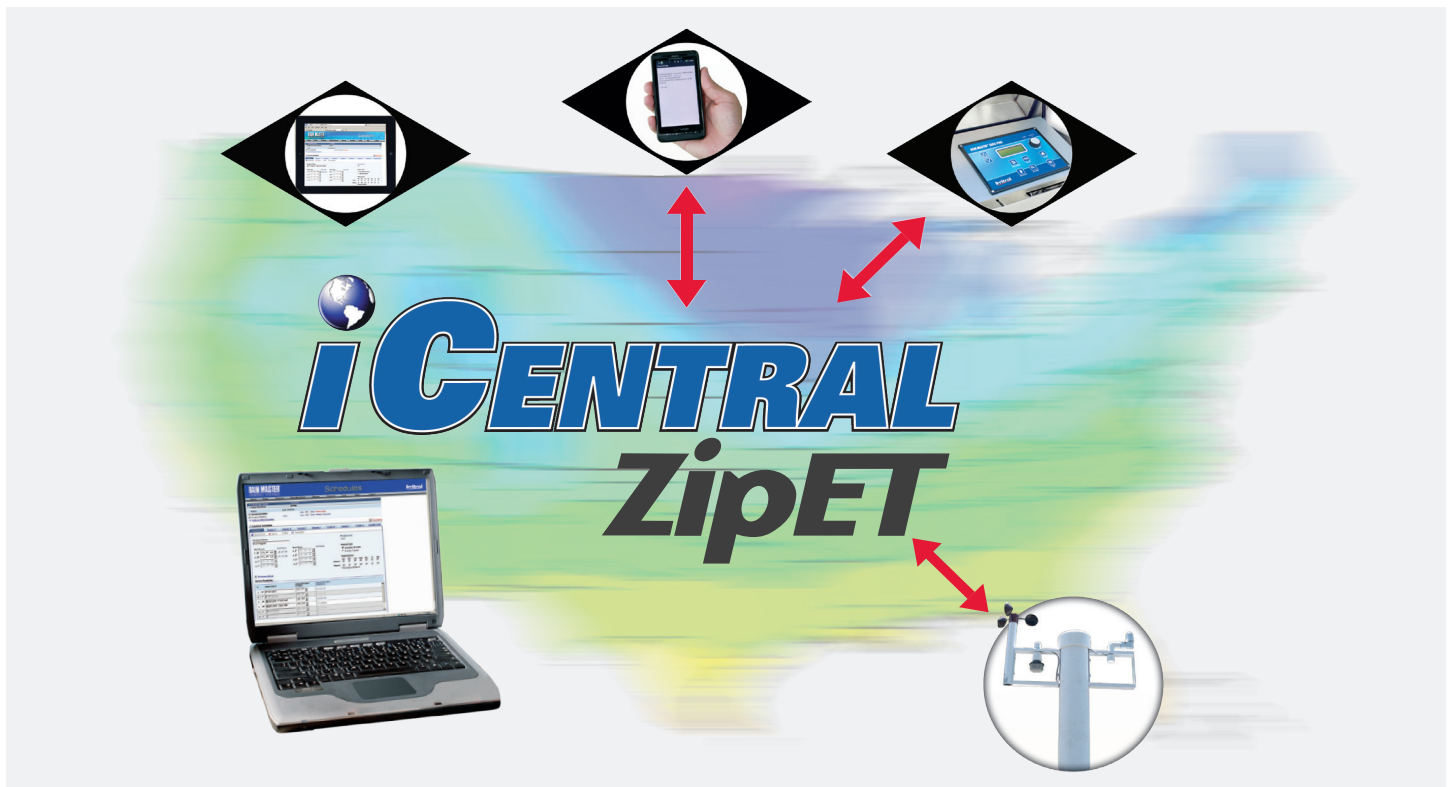


i-Central[™]

INTERNET-BASED CENTRAL CONTROL



The Rain Master *iCentral* software is one of the most comprehensive and affordable web-based water management systems on the market. It allows wireless central control for one or more Rain Master Eagle-i[™] or Eagle Plus[™] irrigation controllers. The *iCentral* website utilizes reliable 2-way wireless communication from the Internet to interface with each field controller and provides alert notifications for a variety of system conditions. An entire irrigation system, no matter how large, can be managed through the iCentral web services.

KEY FEATURES & BENEFITS

AUTOMATIC SCHEDULE GENERATOR (ASG)

Determines the optimal irrigation schedule based on seasonality and site parameters (DU, soil texture, plant type, slope, precipitation, etc)

INTELLI-SYNC[™]

Intelligent synchronization monitors changes made at the *iCentral* website or in the field and allows the operator to accept or reject the entry.

ZipET[™]

Just enter the local zip code once, and local weather information is automatically sent to each controller every day

SMART ALERTS[™]

Sent by *iCentral* for all field alarms generated when a flow and/or electrical "fault" occurs; text messages are sent to cell phone and email address

MOBILE ACCESS VIA ANY SMART-PHONE OR TABLET

Full mobile compatibility

AUTOMATIC INITIATION OF "RAIN SHUTDOWN"

If *iCentral* determines that precipitation in a designated area necessitates a shutdown

AUTOMATICALLY MODIFIES IRRIGATION SCHEDULE MODIFICATION

Based upon daily ET, as well as plant watering requirements

OPTIONAL FLOW SENSOR(S)

Detects excess flow, no flow, mainline flow and unscheduled flow conditions, and sends alert messages for each

VARIETY OF DATA/REPORT RESOURCES

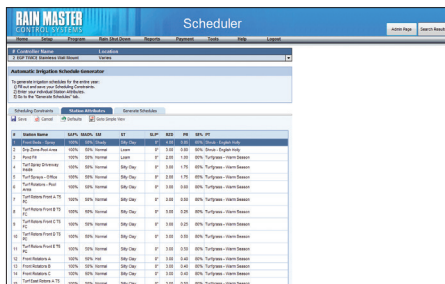
Shows web and field activity to allow detailed analysis of the system's efficiency

HOW DOES ZipET WORK?

The technical term for plant usage of water is called "EvapoTranspiration" (ET). Rain Master receives reliable raw weather information on a daily basis from thousands of federally regulated weather stations throughout the United States. The weather information is validated and converted into industry accepted ET values. Site specific ET information is then delivered to your controllers based upon your designated iCentral weather setup criteria.

ZipET™ is the *iCentral* feature that automatically sends weather information every 24 hours to each controller based on the entry of the local zip code in the Weather Setup page. Upon receipt of the weather information, the Eagle-i and Eagle-i Plus controllers intelligently modify scheduled station runtimes by replacing just enough water to maintain plant water requirements for that day. By changing irrigation schedules based upon need, significant water savings can be achieved.

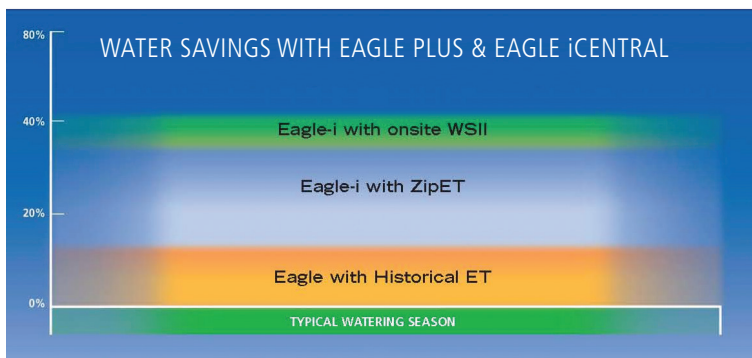
Automatic Schedule Generator



Remote Rain Shutdown



ANNUAL WATER SAVINGS*



*Depicted annual water savings only. Individual site water savings may vary depending on programming and operational characteristics, as well as site conditions.

iCENTRAL WITH EAGLE-i™ & EAGLE PLUS™

- Multi-level Auto Scheduler options maximizes water savings
- ET calculations based upon Irrigation Association accepted standards.
- ET scheduling utilizes industry accepted water budget methodology.
- 24/7 365 day ET synchronization with ZipET™
- Secured wireless two-way communication
- Flow reports, daily ET information, built-in performance tools.
- Automated system alerts via email or cell phone messaging
- Automatic or manual rain shut off alerts
- Automatic field wire fault protection and detection
- Automatic flow fault alerts

EAGLE-i & EAGLE PLUS TWO-WIRE

Unlike other 2-wire systems, the Rain Master TWICE protocol provides a two-way communication link between the controller, decoders and valves.

- Up to 200 station two-wire capability
- Intelligent "Plug-n-Play" Modular design
- Easy-to-read LED status indication for every command
- LED also displays valve activation and diagnostic reporting
- Troubleshooting capabilities:
 - LED decoder "active" indication
 - LED valve power "on" indication
 - Two-way communication verification
- Each decoder has unique address
- Decoders will automatically shut off if communication is lost
- A short automatically shuts down any valve
- Valves can be operated up to 100' radius of the decoder
- Operational Temp: -20 to 60 C
- Electrical connection requirements: Water tight connectors (WP-Dielectric Gel)

We reserve the right to improve our products and make changes in the specifications and designs without notice and without incurring obligation. Products depicted in this brochure are for demonstration purposes only. Actual products offered for sale may vary in design and features.