

# Technical Bulletin

**Bulletin No.**

**016 Rev B**

**Subject:**

**ET Tracker Troubleshooting in a Flow Max Setup**

**Page 1 of 3**

**Product Applicability:**

**Evolution Dx2 Controllers**

**Engineering Release:**

**R. A. Olson**

**Engineering Release Date:**

**June 20, 2003**

**Distribution:**

**APPROVED FOR GENERAL RELEASE**

## Reference Material:

- Weather Station Installation Instructions and Maintenance Guide
- Evolution DX2 User's Manual and Field Maintenance Guide

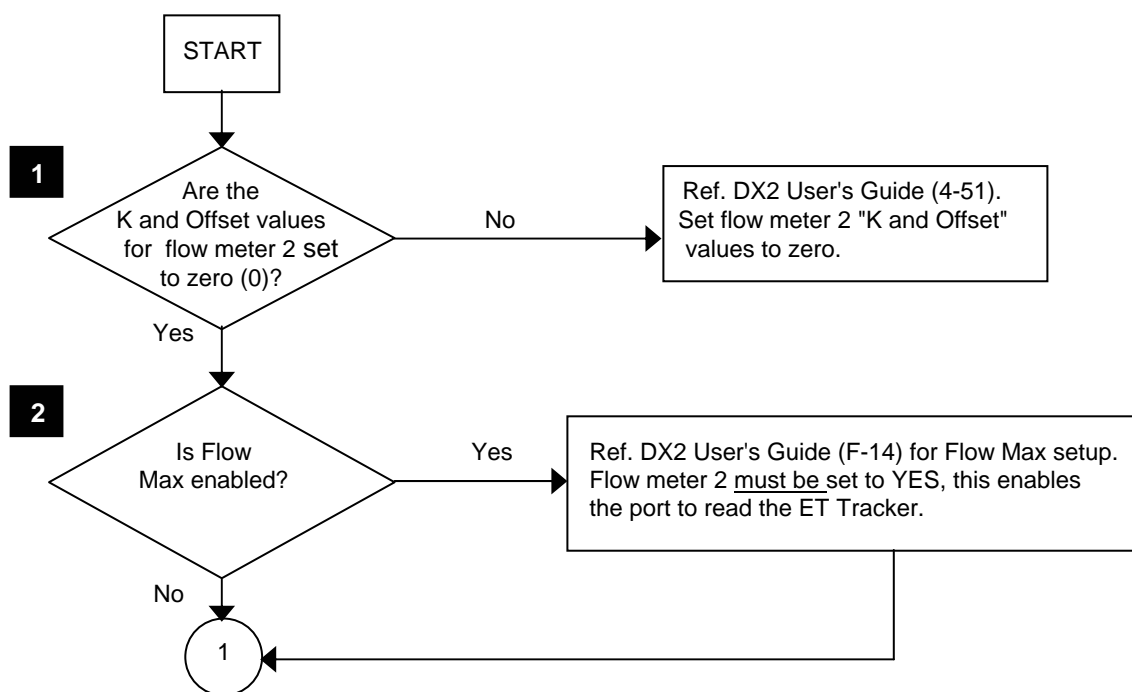
## ET Tracker in a Flow Max Setup:

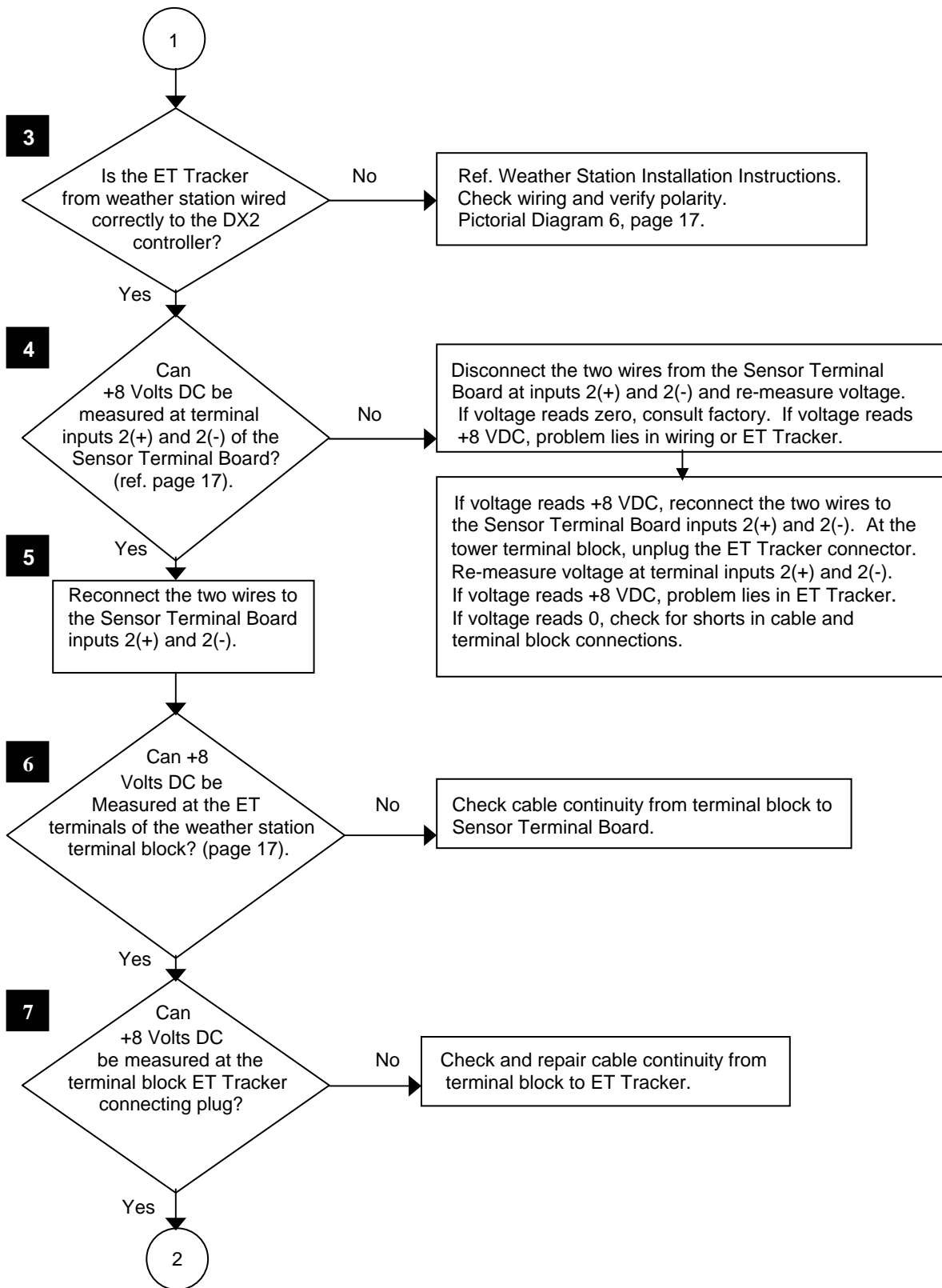
- Refer to page 17, Diagram 6, of the Weather Station Maintenance Guide for ET Tracker connections to a DX2 Controller.
- Refer to Appendix F of the DX2 User's Manual for Flow Max descriptions.

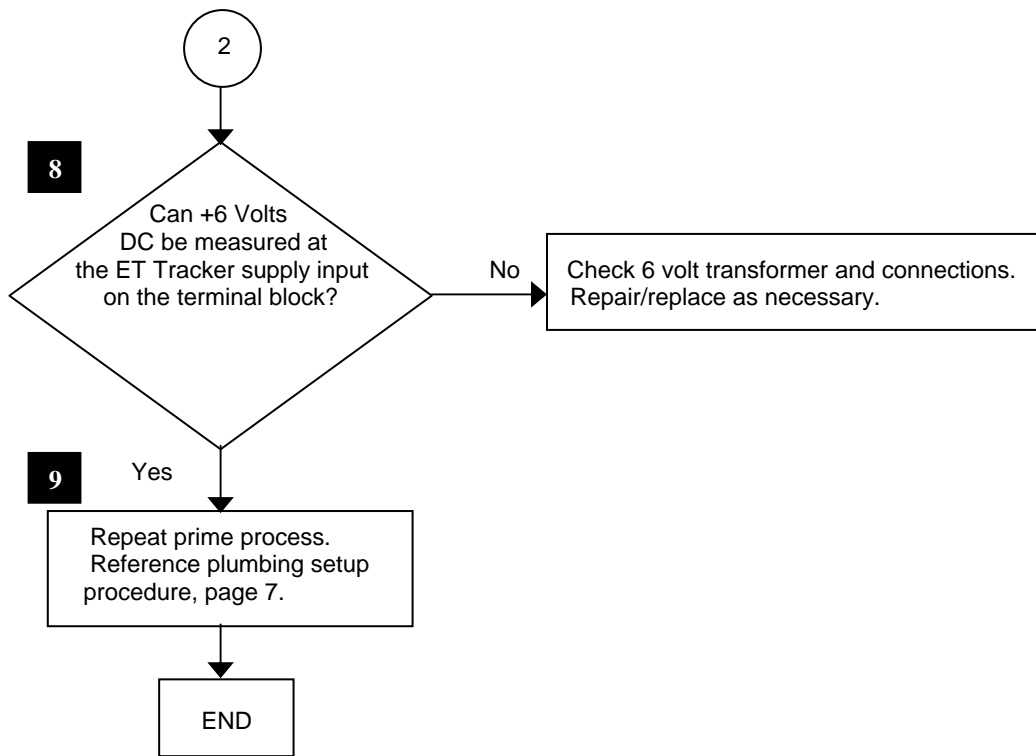
## Troubleshooting Flow Chart:

(Replaces pages 31 and 32 of the Weather Station Maintenance Guide).

### Symptom: No ET Reading







End of Bulletin